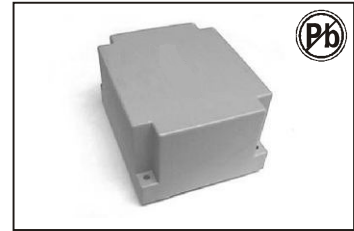


50/60HZ PCB MOUNT TRANSFORMERS – UI RANGE

60W 48 x 26–UI 4826 SERIES



FEATURES:

- 115 V–230 V supply voltage by serie/parallel connection
- Vacuum filling
- Two compartments bobbins
- Degree of protection IP 00

OPTIONS:

- Bulk packaging is standard
- Custom design available

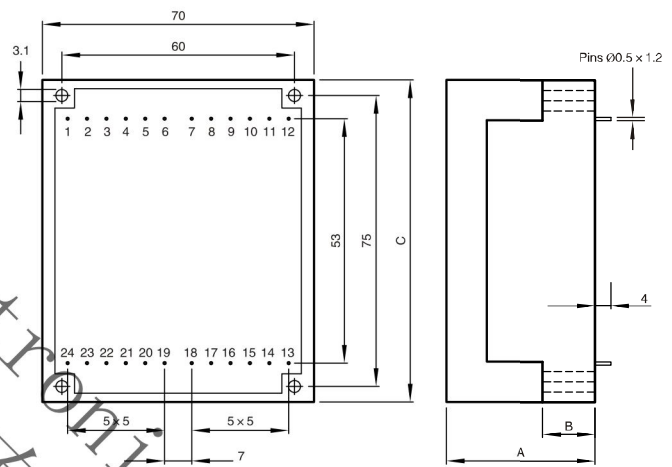
COMMON APPLICATIONS:

- Medical equipments
- Industrial equipments
- Industrial controls
- Test equipment
- Industrial computers
- Avionics & telecom

ELECTRICAL CHARACTERISTICS

| PRIMARY VOLTAGE: 115~230 | | | | |
|--------------------------|---------------------|----------------------|-------------------|------------------------|
| Part Number | Secondary voltage V | Secondary Current mA | No-load voltage V | Ambient Temperature °C |
| UI 482673 | 2 x 6 | 2 x 5000 | 2 x 6.6 | T50B |
| UI 482674 | 2 x 9 | 2 x 3333 | 2 x 9.9 | T50B |
| UI 482675 | 2 x 12 | 2 x 2500 | 2 x 13.1 | T50B |
| UI 482676 | 2 x 15 | 2 x 2000 | 2 x 16.4 | T50B |
| UI 482677 | 2 x 18 | 2 x 1667 | 2 x 19.7 | T50B |
| UI 482678 | 2 x 24 | 2 x 1250 | 2 x 26.3 | T50B |

PHYSICAL CHARACTERISTICS



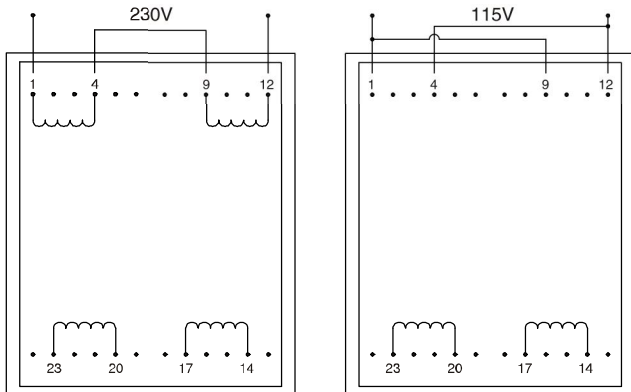
All dimensions in mm

TECHNICAL INFORMATION

- Resin class UL 94 VO
- Fuse protection in secondary winding (see diagram)
- 100% tested production
- Conform to EN 61558 Approval under process
- UL 506 approved

| CIRCUIT | RATING | A | B | C | WEIGHT(g) |
|-------------|--------|------|------|----|-----------|
| UI39 x 8 | 10VA | 38.5 | 13.5 | 83 | 285 |
| UI39 x 10.2 | 14VA | 48.5 | 14.5 | 86 | 335 |

Possible primary connections



Possible secondary connections

