

IRON POWDER CORE SERIES PRODUCTS

Drum Type Cores

STANDARD SPECIFICATIONS

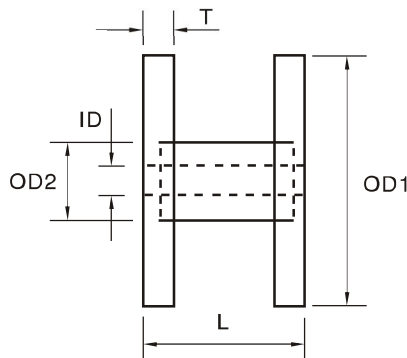
Part Number	A_L nH/N ²	OD1 mm	OD2 mm	ID mm	T mm	L mm	Window cm ²
DR36.1 × 23.8 × 12.7	85	36.10	12.70	4.37	3.96	23.80	1.84
DR36.1 × 33.3 × 12.7	60	36.10	12.70	4.37	3.96	33.30	2.95
DR46.9 × 31.8 × 15.9	100	46.90	15.90	5.56	4.75	31.80	3.43
DR46.9 × 41.3 × 15.9	80	46.90	15.90	5.56	4.75	41.30	4.90
DR63.5 × 34.9 × 19.1	130	63.50	19.10	6.60	4.75	34.90	5.66
DR63.5 × 47.6 × 19.1	95	63.50	19.10	6.60	4.75	47.60	8.49

TECHNICAL INFORMATION & PHYSICAL CHARACTERISTICS

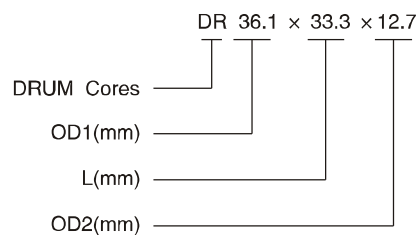
Size tolerance (mm)

Part Number	OD1	OD2		ID		L	T
DR36.1 – DR63.5	± 0.5	+0.00	-0.15	+0.15	-0.00	± 0.50	± 0.20

A_L Value listed is approximate and is for indication only.
It provides other shape for high current choke to be accepted
few electromagnetic radiation, also has best effect
for the jointed ring of high power loudspeaker.



TYPICAL PART No.



L_e : Mean Magnetic Path Length

A_e : Cross Section Area

V_e : Core Volume