

Primary Single-Turn (Screws) Series

The series of Screws Mounted Miniature current transformers are designed specifically for integration into products which require exceptionally accurate primary signal transfor-mation while exposed to harsh environmental operating con-ditions.

An internal precision resistor across the secondary winding of the CT provides a low safe voltage output. It can save time and the installation costs.

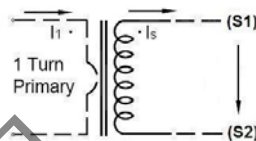
◆ Features

- Primary Single-Turn,Screws Mounted
- Wide inner window, allowing clamping of big cables or bus-bars
- Wide range of sizes to accommodate all the existing installations

◆ Applications

- Current measurement, monitoring and protection for electrical wiring and equipment.
- Instrumentation,Current and power measurement for electric motors, lighting, air compressor,heating and ventilation system, air-condition equipment and automation – control system.
- Current, power and energy monitoring device.
- Relay protection device.

◆ Circuit connection diagram



◆ Technique Index

Electrical Parameter	
Frequency	50-400Hz
Rated Input	0-5000A
Measuring range	5%In-120%In
Rated Output	0-500mA
Ratio	± 0.1%
Phase angle	≤ ±5 分
Dielectric strength	2.5KV/1mA/1min
Insulation Resistance	DC500V/1000MΩ min

Mechanical Parameter	
Case	ABS /UL94-V0
Bobbin	PBT
Core	Permalloy or Nanocrystalline
Internal structure	Epoxy
Construction	Screws
Operating Temp	-25℃~+75℃
Operating Humidity	≤85%
Output Connection	Terminal or leads

◆ Type Selection

Mfg P/N	Rated Input (A)	Ratio	Burden (Ω)	Accuracy	Dimensions (mm)			
					ID	W	H	T
SCT2091A	0-100A	1000: 1	≤1K	0.1、0.2	12	46	53	25
SCT2091B	0-200A		≤1K	0.1、0.2	20	46	53	25
SCT2091C	0-100A	↓	≤1K	0.1、0.2	12	52	40	22
SCT2091D	0-200A		≤1K	0.1、0.2	20	55	49	15
SCT2091E	0-1000A	10000: 1	≤1K	0.1、0.2	50	100	108	38
SCT2811C-12	0-100A	↓	≤200	0.1、0.2	12	60	45	21
SCT2811C-15	0-160A		≤200	0.1、0.2	15	58	45	23
SCT2811C-20	0-200A	1000: 1	≤200	0.1、0.2	20	69	60	20
SCT2811C-25	0-400A		≤200	0.1、0.2	25	80	70	23
SCT2811C-35	0-600A	↓	≤200	0.1、0.2	35	100	90	30
SCT2811C-45	0-800A		≤500	0.1、0.2	45	120	102	34
SCT2811C-55	0-1000A	10000: 1	≤800	0.1、0.2	55	150	126	36
SCT2811C-72	0-2000A		≤1000	0.1、0.2	72	175	150	42

Primary Single-Turn (Screws) Series

Mfg P/N	Rated Input (A)	Ratio	Burden (Ω)	Accuracy	Dimensions (mm)			
					ID	W	H	T
SCT2811B-25	0-400A	1000: 1 ↓ 10000: 1	≤ 200	0.1、0.2	25.0	50.0	55.0	23.0
SCT2811B-45	0-630A		≤ 200	0.1、0.2	45.0	77.0	85.0	24.0
SCT2811B-65	0-1000A		≤ 200	0.1、0.2	65.0	83.0	104.0	24.0
SCT2811B-80	0-2000A		≤ 200	0.1、0.2	80.0	112.0	122.0	28.0
SCT2811B-100	0-2500A		≤ 1000	0.1、0.2	100.0	131.0	136.0	24.0
SCT2811B-150	0-3000A		≤ 200	0.1、0.2	150.0	200.0	209.0	28.0
SCT2811B-200	0-5000A		≤ 800	0.1、0.2	200.0	253.0	270.0	35.0
SCT2811B-300	0-5000A		≤ 1000	0.1、0.2	300.0	360.0	380.0	40.0
SCT-R10	0-80A		≤ 500	0.1、0.2	9.0	27.0	32.0	18.0
SCT-R12	0-50A		≤ 250	0.1、0.2	12.5	36.0	40.0	18.0

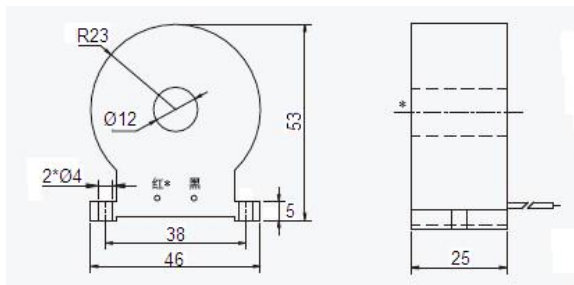
Fusign Electronics Co., Ltd
富思安电子有限公司

Primary Single-Turn (Screws) Series

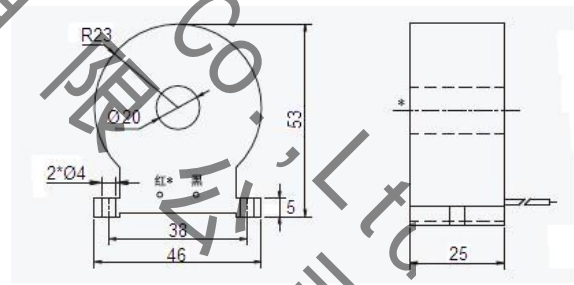
Dimensions:

Drawing	Model	Dimensions (mm)				
		Ø	A	B	C	D
	SCT2811C-12	12	60	45	21	20
	SCT2811C-15	15	58	45	23	20
	SCT2811C-20	20	69	60	20	25
	SCT2811C-25	25	80	70	23	29
	SCT2811C-35	35	100	90	30	37
	SCT2811C-45	45	120	102	34	45
	SCT2811C-55	55	150	126	36	53
	SCT2811C-72	72	175	150	42	67

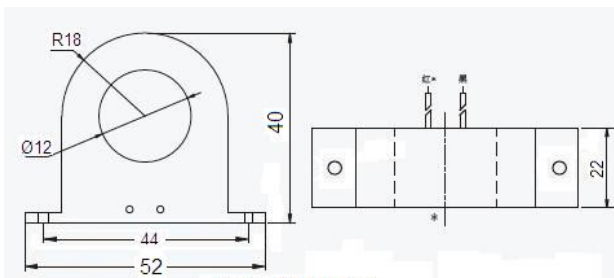
Drawing	Model	Dimensions (mm)								
		Ø	A	B	C	D	E	F	G	H
	SCT2811B-25	25.0	50.0	55.0	23.0	25.0	36.5	5.0	45.0	36.5
	SCT2811B-45	45.0	77.0	85.0	24.0	38.0	54.0	9.0	64.0	54.0
	SCT2811B-65	65.0	83.0	104.0	24.0	48.0	70.0	12.0	83.0	70.0
	SCT2811B-80	80.0	112.0	122.0	28.0	56.0	80.0	14.0	89.0	80.0
	SCT2811B-100	100.0	131.0	136.0	24.0	66.0	96.0	14.0	108.0	107.0
	SCT2811B-150	150.0	200.0	209.0	28.0	100.0	145.0	16.5	184.0	177.0
	SCT2811B-200	200.0	253.0	270.0	35.0	125.0	180.0	20.0	220.0	205.0
	SCT2811B-300	300.0	360.0	380.0	40.0	180.0	280.0	25.0	320.0	305.0



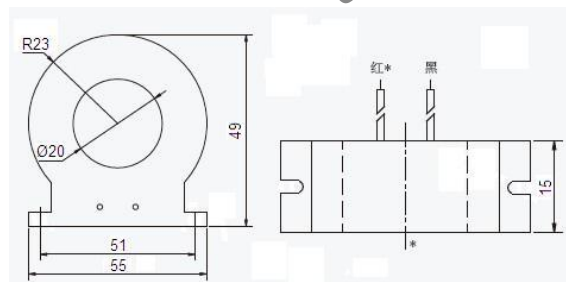
SCT2091A



SCT2091B

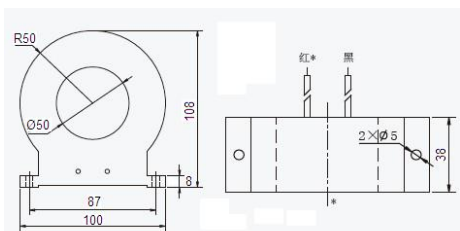


SCT2091C

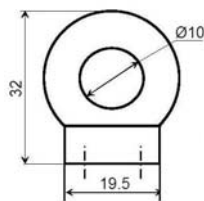


SCT2091D

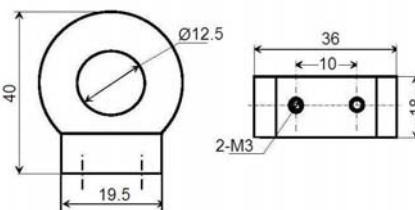
Primary Single-Turn (Screws) Series



SCT2091E



SCT-R10



SCT-R12

Fusign Electronics Co., Ltd
伏燻电子有限公司