

## Three Phase Current Transformers

# CTB(Z)2901 Series

**CTB(Z)2901 series** Three Phase current transformer is a combination of three transformers and zero-flux CT together to form one, It has been specially Designed for motor, An internal precision resistor across the secondary winding of the CT provides a low safe voltage output. It can save time and the installation costs.

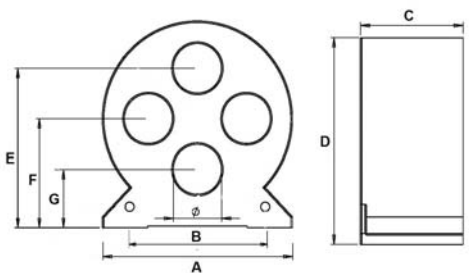
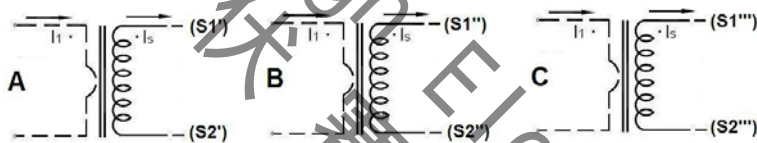
### ◆ Features

- Epoxy Potting, Double-screw fastening, safe, easy to install, portable
- Wide inner window, allowing clamping of big cables or bus-bars
- Wide range of sizes to accommodate all the existing installations

### ◆ Applications

- Current measurement, monitoring and protection for electrical wiring and equipment.
- Current and power measurement for electric motors, lighting, air compressor, heating and ventilation system, air-condition equipment and automation – control system.
- Relay protection device.

### ◆ Circuit connection diagram



### ◆ Technique Index

Electrical Parameter		Mechanical Parameter	
Frequency	50-400Hz	Case	ABS /UL94-V0
Rated Input	5A-630A	Bobbin	PBT
Measuring range	5%In-130%In	Core	Silicon steel or Nanocrystalline
Rated Output	0-10V(AC)	Internal structure	Epoxy
Ratio	$\leq \pm 0.1\%$	Construction	Screw
Phase angle	$\leq \pm 5\text{min}$	Operating Temp	$-25^{\circ}\text{C} \sim +75^{\circ}\text{C}$
Dielectric strength	2.5KV/1mA/1min	Operating Humidity	$\leq 85\%$
Insulation Resistance	DC500V/100MΩ min	Output Connection	4-cell or 6-cell shielded wire

### ◆ Type Selection

Mfg P/N	Input (A)	Output (A)	Accuracy	Max overload multiples	Dimension(mm)							
					∅	A	B	C	D	E	F	G
CTB(Z)2901A	0-160A	0-10V	0.1	10/3s	18	96	70	32	106	82	58	34
	0-1A	0-1V	0.2	5								
CTB(Z)2901B	0-630A	0-10V	0.1	10/3s	32	126	90	68	133	103	70	38
	0-1A	0-1V	0.2	5								