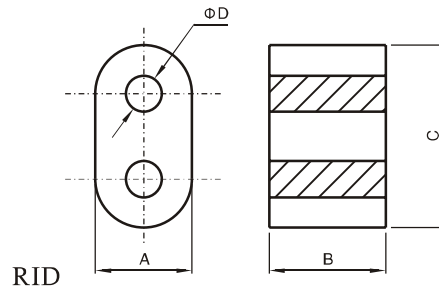


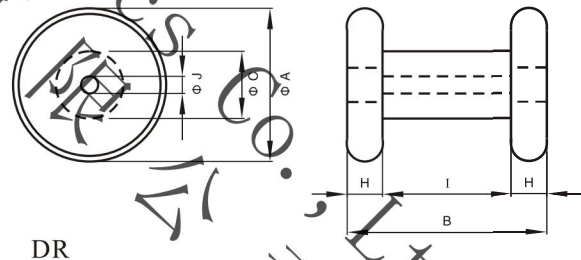
RID & DR TYPE CORES



RID TYPE CORES
(MATERIALS): P1, P2, P3, R5K
Dimensions & Effective parameter

CORES TYPE	Dimensions(mm)				Weight (g)
	ΦD	B	C	ΦD	
8×7×15	5.2 ± 0.3	7.0 ± 0.3	15.3 ± 0.6	5.0 ± 0.3	1.8
7.5×10.3×13.3	7.5 ± 0.3	10.3 ± 0.4	$13. \pm 0.6$	4.2 ± 0.25	2.8
7.25×4.2×6.2	$4.2-0.4$	$6.2-0.5$	$7.25-0.5$	$1.81+0.3$	1.3

DR TYPE CORES
(MATERIALS):H5K, P1, P2
Dimensions & Effective parameter



CORES TYPE	Dimensions(mm)						Weight (g)
	ΦA	B	ΦC	H	I	ΦJ	
DR1415	14 ± 0.8	15 ± 1.0	8 ± 0.2	3.0	9 ± 0.6	2.5 ± 0.25	7
DR2214	22 ± 1.0	14.5 ± 1.0	12 ± 0.3	3.5	7.5 ± 0.6	4.5 ± 0.3	15
DR2218	22 ± 1.0	18.5 ± 1.0	12.5 ± 0.3	3.5	11.5 ± 0.6	4.5 ± 0.3	17
DR2820	28 ± 1.0	20 ± 1.5	16.95 ± 0.35	4.0	12 ± 0.6	4.5 ± 0.3	34
DR2825	28 ± 1.0	25 ± 1.5	16.95 ± 0.35	4.0	17 ± 0.6	4.5 ± 0.3	39
DR3525	35 ± 1.0	25 ± 1.5	20.9 ± 0.4	3.5	18 ± 0.6	4.75 ± 0.25	56
DR4025	40 ± 1.0	25 ± 1.5	22.9 ± 0.4	4.0	17 ± 0.6	4.5 ± 0.3	78
DR4030	40 ± 1.0	30 ± 1.5	22.9 ± 0.4	4.0	22 ± 0.6	4.5 ± 0.3	90
DR4530	45 ± 1.0	35 ± 1.5	26.85 ± 0.45	4.5	26 ± 0.6	4.5 ± 0.3	133
DR5635	56 ± 1.5	35 ± 1.5	32.83 ± 0.53	5.0	25 ± 0.6	4.5 ± 0.3	212