



# THROUGH-HOLE RADIAL HIGH CURRENT POWER CHOKES

## AIRD 01 SERIES

### FEATURES:

- High Saturation Material
- Polyolefin Shrink Tubing
- Low DC Resistance
- High Reliability Low cost

### OPTIONS:

- Packaging: Tape & Reel is Standard (Qty: 1000 pcs)  
Bulk packaging available for smaller quantities
- Tolerance: 10% is standard, tighter tolerances available.

### COMMON APPLICATIONS:

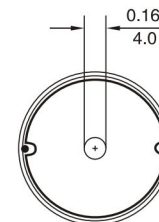
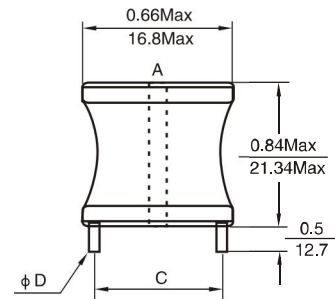
- Switching Regulators
- RFI Suppression Filters
- SCR and TRIAC Controls
- Automotive Systems

### STANDARD SPECIFICATIONS

| Part Number | L (uH) @1KHz | DCR (Ω Max) | IDC (A Max) | Dim(Inches/mm) C Approx. | Dim(Inches/mm) D Nom. |
|-------------|--------------|-------------|-------------|--------------------------|-----------------------|
| AIRD01-1R0M | 1.0          | 0.003       | 9           | 0.55/13.97               | 0.051/1.30            |
| AIRD01-1R2M | 1.2          | 0.003       | 9           | 0.55/13.97               | 0.051/1.30            |
| AIRD01-1R5M | 1.5          | 0.004       | 9           | 0.55/13.97               | 0.051/1.30            |
| AIRD01-1R8M | 1.8          | 0.004       | 9           | 0.55/13.97               | 0.051/1.30            |
| AIRD01-2R2M | 2.2          | 0.005       | 9           | 0.55/13.97               | 0.051/1.30            |
| AIRD01-2R7M | 2.7          | 0.005       | 9           | 0.55/13.97               | 0.051/1.30            |
| AIRD01-3R3M | 3.3          | 0.005       | 9           | 0.55/13.97               | 0.051/1.30            |
| AIRD01-3R9M | 3.9          | 0.006       | 9           | 0.55/13.97               | 0.051/1.30            |
| AIRD01-4R7M | 4.7          | 0.007       | 9           | 0.55/13.97               | 0.051/1.30            |
| AIRD01-5R6M | 5.6          | 0.007       | 9           | 0.55/13.97               | 0.051/1.30            |
| AIRD01-6R8M | 6.8          | 0.008       | 9           | 0.55/13.97               | 0.051/1.30            |
| AIRD01-8R2M | 8.2          | 0.009       | 9           | 0.55/13.97               | 0.051/1.30            |
| AIRD01-100K | 10           | 0.010       | 9           | 0.55/13.97               | 0.051/1.30            |
| AIRD01-120K | 12           | 0.011       | 9           | 0.55/13.97               | 0.051/1.30            |
| AIRD01-150K | 15           | 0.015       | 7.2         | 0.53/13.46               | 0.045/1.14            |
| AIRD01-180K | 18           | 0.016       | 7.2         | 0.53/13.46               | 0.045/1.14            |
| AIRD01-220K | 22           | 0.020       | 5.5         | 0.53/13.46               | 0.045/1.14            |
| AIRD01-270K | 27           | 0.030       | 4.5         | 0.53/13.46               | 0.040/1.01            |
| AIRD01-330K | 33           | 0.040       | 4.0         | 0.53/13.46               | 0.040/1.01            |
| AIRD01-390K | 39           | 0.046       | 4.0         | 0.53/13.46               | 0.040/1.01            |
| AIRD01-470K | 47           | 0.062       | 2.8         | 0.53/13.46               | 0.036/0.91            |
| AIRD01-560K | 56           | 0.069       | 2.8         | 0.53/13.46               | 0.036/0.91            |
| AIRD01-680K | 68           | 0.077       | 2.8         | 0.50/12.70               | 0.032/0.81            |
| AIRD01-820K | 82           | 0.083       | 2.8         | 0.50/12.70               | 0.032/0.81            |
| AIRD01-101K | 100          | 0.095       | 2.8         | 0.50/12.70               | 0.032/0.81            |
| AIRD01-121K | 120          | 0.127       | 2.0         | 0.50/12.70               | 0.029/0.73            |
| AIRD01-151K | 150          | 0.181       | 1.6         | 0.50/12.70               | 0.029/0.73            |
| AIRD01-181K | 180          | 0.217       | 1.6         | 0.50/12.70               | 0.025/0.63            |
| AIRD01-221K | 220          | 0.240       | 1.6         | 0.50/12.70               | 0.025/0.63            |
| AIRD01-271K | 270          | 0.300       | 1.6         | 0.47/11.94               | 0.020/0.51            |
| AIRD01-331K | 330          | 0.336       | 1.3         | 0.47/11.94               | 0.020/0.51            |
| AIRD01-391K | 390          | 0.460       | 1.0         | 0.47/11.94               | 0.020/0.51            |
| AIRD01-471K | 470          | 0.636       | 0.8         | 0.47/11.94               | 0.020/0.51            |
| AIRD01-561K | 560          | 0.696       | 0.8         | 0.47/11.94               | 0.020/0.51            |

Note: 1. K= ± 10%, M= ± 20%

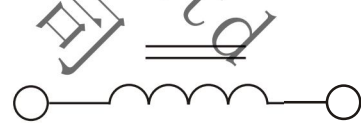
### PHYSICAL CHARACTERISTICS



DIMENSIONS: 

|        |    |
|--------|----|
| INCHES | mm |
|--------|----|

### ELECTRONICAL SCHEMATIC



### TECHNICAL INFORMATION:

- Inductance Testing: ,HP4284A,HP4285A or equivalent
- RDC:QuadTech 1880 Milliohmmer
- Q- HP4342A
- SRF-HP4191A or HP4194A
- Rated Current L value drop 10% typ. at I<sub>DC</sub> against its initial value
- Temperature rise 40°C Max Reference ambient temperature
- Solderability: 75% of the lead wire shall be covered
- Soldering Methods: Wave, Reflow
- Operating Temperature: -25°C to +85°C
- Storage Temperature: -55°C to +125°C
- Terminal bending strength: 24.5N Min
- Moisture resistance: ΔL/L ≤ ± 10% ΔQ/Q ≤ ± 25%

Note: All specifications subject to change without notice.