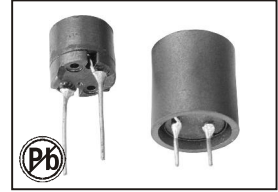


THROUGH-HOLE RADIAL SHIELDED POWER INDUCTOR

LGS 0606-0708 SERIES



FEATURES:

- Magnetically Shielded Construction
- Heat Resistant Molded Resin
- Excellent Mechanical Strength
- Excellent Solderability
- High Reliability
- Low Profile

OPTIONS:

- Packaging: Tape & Reel is standard (Qty:2000pcs)
Bulk packaging available for smaller quantities
- Tolerance: 10% and 5% is standard, tighter tolerances available

COMMON APPLICATIONS:

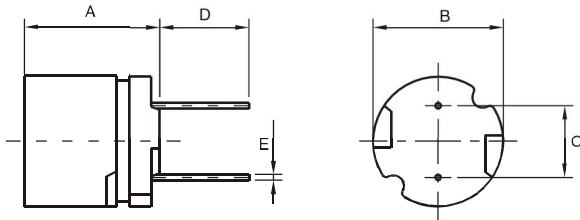
- VCRs, AC/DC, DC/DC Converter
- Video Cameras
- Communication System
- Automotive Systems
- Liquid Crystal Televisions
- Power Supplier
- Network Systems
- Computer Peripheral Equipment

ELECTRICAL CHARACTERISTICS:

Part Number	L μH	Test Freq Mhz	DCR Ω Max	IDC Max mA	Part Number	L μH	Test Freq Mhz	DCR Ω Max	IDC Max mA
LGS0606-220M	22	2.52	0.13	960	LGS0708-220M	22	2.52	0.08	1600
LGS0606-270M	27	2.52	0.18	870	LGS0708-270M	27	2.52	0.10	1400
LGS0606-330M	33	2.52	0.21	780	LGS0708-330M	33	2.52	0.14	1300
LGS0606-390M	39	2.52	0.26	720	LGS0708-390M	39	2.52	0.15	1200
LGS0606-470M	47	2.52	0.29	660	LGS0708-470M	47	2.52	0.17	1100
LGS0606-560K	56	2.52	0.33	600	LGS0708-560K	56	2.52	0.19	990
LGS0606-680K	68	2.52	0.36	550	LGS0708-680K	68	2.52	0.21	890
LGS0606-820K	82	2.52	0.39	500	LGS0708-820K	82	2.52	0.27	810
LGS0606-101K	100	0.001	0.54	450	LGS0708-101K	100	0.001	0.32	740
LGS0606-121K	120	0.001	0.62	410	LGS0708-121K	120	0.001	0.36	670
LGS0606-151K	150	0.001	0.72	370	LGS0708-151K	150	0.001	0.51	600
LGS0606-181K	180	0.001	0.88	340	LGS0708-181K	180	0.001	0.57	550
LGS0606-221K	220	0.001	0.99	300	LGS0708-221K	220	0.001	0.76	500
LGS0606-271K	270	0.001	1.52	270	LGS0708-271K	270	0.001	0.86	450
LGS0606-331K	330	0.001	1.69	250	LGS0708-331K	330	0.001	0.97	410
LGS0606-391K	390	0.001	1.85	230	LGS0708-391K	390	0.001	1.28	370
LGS0606-471K	470	0.001	2.85	210	LGS0708-471K	470	0.001	1.44	340
LGS0606-561K	560	0.001	3.21	190	LGS0708-561K	560	0.001	1.61	310
LGS0606-681K	680	0.001	3.60	170	LGS0708-681K	680	0.001	2.07	280
LGS0606-821K	820	0.001	4.87	160	LGS0708-821K	820	0.001	2.33	260
LGS0606-102K	1000	0.001	5.65	140	LGS0708-102K	1000	0.001	2.72	230
					LGS0708-122K	1200	0.001	3.98	210
					LGS0708-152K	1500	0.001	4.50	190
					LGS0708-182K	1800	0.001	6.81	170
					LGS0708-222K	2200	0.001	7.56	160
					LGS0708-272K	2700	0.001	8.54	140
					LGS0708-332K	3300	0.001	9.74	130
					LGS0708-392K	3900	0.001	12.9	120
					LGS0708-472K	4700	0.001	14.7	110
					LGS0708-562K	5600	0.001	20.4	99
					LGS0708-682K	6800	0.001	23.0	89
					LGS0708-822K	8200	0.001	30.6	81
					LGS0708-102K	10000	0.001	35.0	74

Note: 1. K= ± 10%, M= ± 20%, N= ± 30%

PHYSICAL CHARACTERISTICS:



DIMENSIONS IN:mm

Part number	A	B	C	D	E
LGS0606	6.5Max	6.0 ± 0.5	4.0 ± 0.5	4.0Min	0.55
LGS0708	7.5Max	7.8 ± 0.5	5.0 ± 0.5	4.0Min	0.65

TECHNICAL INFORMATION:

- Testing: (Equivalent acceptable) Inductance: HP4342A HP4284A
RDC: QuadTech 1880 Milliohmmer
Q- HP4342A - SRF-HP4191A
DC current is decreased 10% against its initial value
- Operating temperature: -40°C to +105°C
- Storage Temperature: -40°C to +105°C
- Solder methods: Vapor Phase, Infrared Reflow
- Resistance to soldering heat: 260°C for 10 seconds
- Solvent resistance: Conforms to MIL-STD-202E
- Marking: Inductance & Tolerance
- Note: All specifications subject to change without notice.